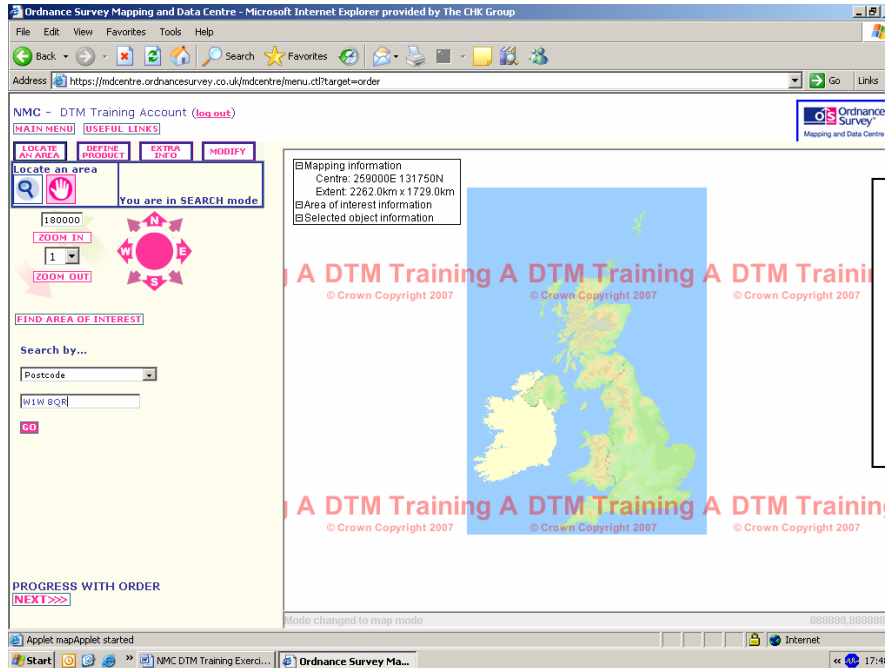


Creating a 'cookie cut' area of OS Sitemap DXF data

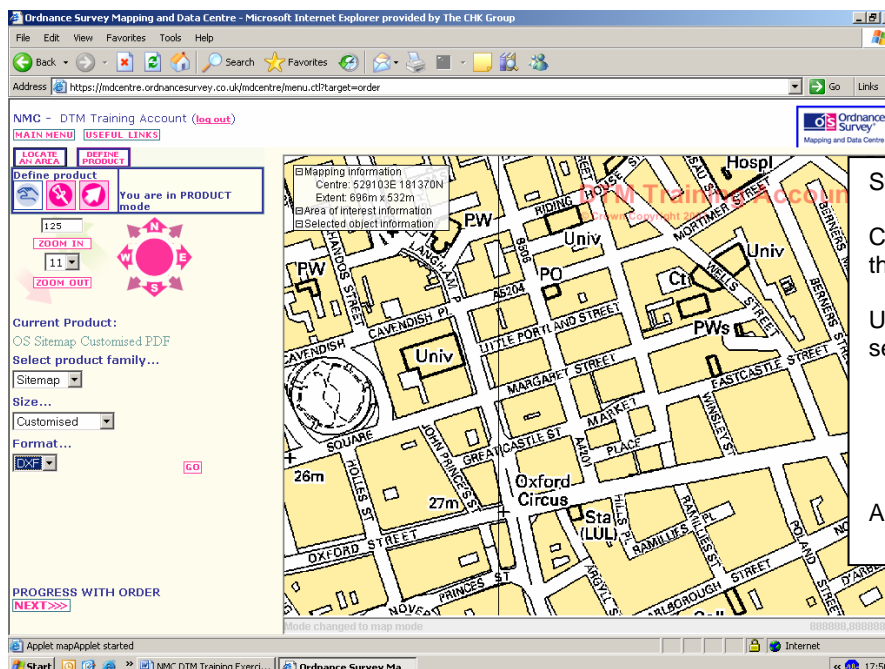
As specified in Exercise 1, log in to the site, click on create a new order and select the 'Magnifying Glass' symbol under the 'Locate an area' tab.



Step 1

Click on the drop down menu under 'Search by' and postcode.

Enter the details (e.g. W1W 8QR) and press the 'GO' button.



Step 2

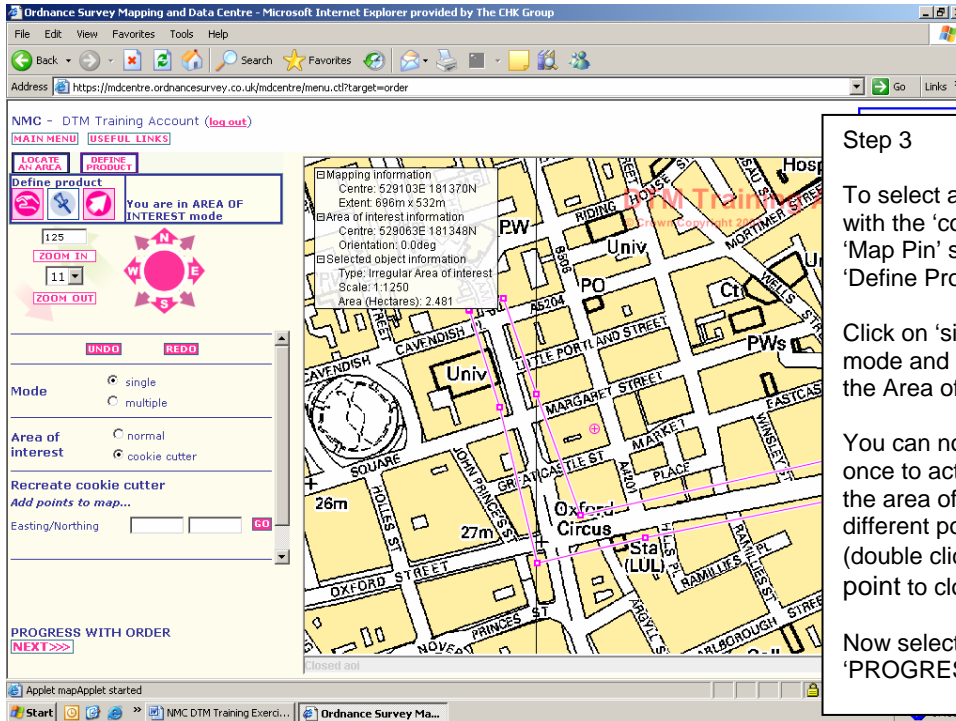
Choose the 'Define Product' tab then click on the 'Hand' icon.

Using the drop down menus select:

- Sitemap
- Customised
- DXF

And select 'GO'.

National Map Centre - Desktop Mapping Exercise 4



The screenshot shows the 'Ordnance Survey Mapping and Data Centre' web application in a Microsoft Internet Explorer browser. The main interface includes a control panel on the left and a map of Oxford on the right. The control panel has the following sections:

- Define product:** Includes 'LOCATE AN AREA' and 'DEFINE PRODUCT' buttons. A status message reads 'You are in AREA OF INTEREST mode'.
- Map Navigation:** 'ZOOM IN' and 'ZOOM OUT' buttons, a zoom level dropdown set to '11', and a compass rose.
- Mode:** Radio buttons for 'single' (selected) and 'multiple'.
- Area of interest:** Radio buttons for 'normal' and 'cookie cutter' (selected).
- Recreate cookie cutter:** 'Add points to map...' button and input fields for Easting/Northing coordinates.
- Progress:** 'PROGRESS WITH ORDER' section with a 'NEXT >>>' button.

The map shows a street grid in Oxford with a pink 'cookie cutter' shape defining an Area of Interest (AOI) around the University area. A data popup window is visible over the map, displaying the following information:

- Mapping information: Centre: 529103E 181370N, Extent: 696m x 532m
- Area of interest information: Centre: 529063E 181348N, Orientation: 0.0deg
- Selected object information: Type: Irregular Area of Interest, Scale: 1:1250, Area (Hectares): 2.481

Step 3

To select an Area of Interest (AOI) with the 'cookie cutter' select the 'Map Pin' symbol under the 'Define Product' tab.

Click on 'single' or 'multiple' in the mode and select 'cookie cutter' in the Area of Interest.

You can now click on the screen once to activate it and trace out the area of interest by clicking at different points on the map (double clicking the penultimate point to close the area).

Now select the 'Next' icon under 'PROGRESS WITH ORDER'.

To continue with your purchase follow the instructions in Exercises 1, 2 and 3.